



5005 Poppy at The Cottages at the Park for TC 116 - POPPY SPEC

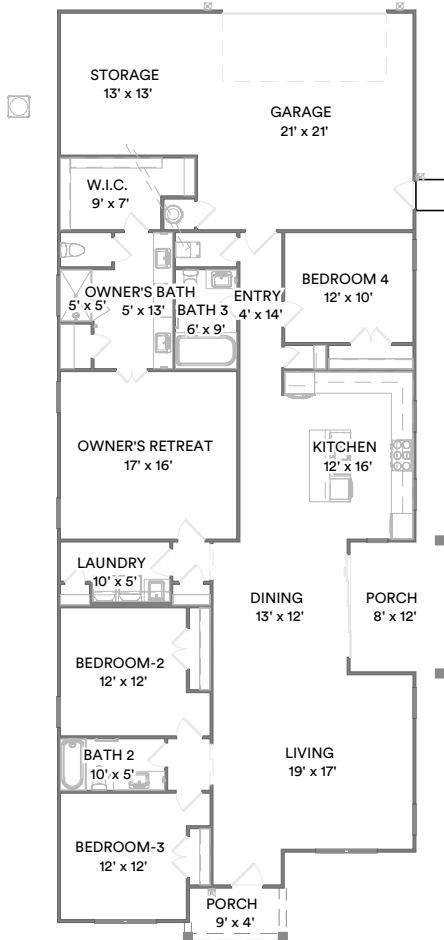
Customized on January 30, 2024

6783 Autumn Ave.

2,262 SQFT | 4 | 3 | 2

Model:	5005 Poppy at Co...	Base Price:	\$463,000
Elevation:	Elevation A	Options:	\$19,745
Lot:	116	Lot Premium:	--
Total Price:	\$482,745	Discounts:	--

Your 5005 Poppy at The Cottages at the Park for TC 116 - POPPY SPEC home includes a Garage Storage, Single Oven with Cooktop, Bed 4 and Bath 3 ILO Flex and 5 other options.



First Floor

Prices, plans, specifications, square footage and availability are subject to change without notice or prior obligation. In the instance an option is unavailable or discontinued we have the right to replace the option with another option that is comparable in look, quantity, and price without notice or prior obligation. Square footage is approximate and may vary upon elevation and/or options selected. Selection made at the Sales Appointment that change the square footage or footprint of the home are final and cannot be changed after the conclusion of the appointment. Selections made at the second Design Appointment are final and cannot be changed after the conclusion of the appointment.



8 Options added to your 5005 Poppy at The Cottages at the Park for TC 116 - POPPY SPEC:

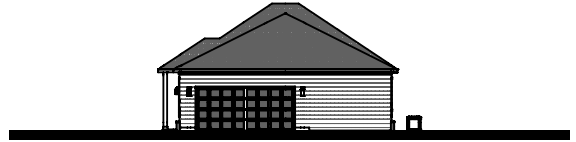
Lower Cabinet With Sink in Utility Room	+\$0
Bed 4 and Bath 3 ILO Flex	+\$4,425
Garage Service Door	+\$825
Single Oven with Cooktop	+\$4,930
Kitchen Cabinets to Ceiling	+\$0
Cabinet Panels at Bar Wall	+\$0
Garage Storage	+\$9,565
Rectangular	+\$0
Options Total:	+\$19,745

Prices, plans, specifications, square footage, and availability are subject to change without notice or prior obligation. In the instance an option is unavailable or discontinued we have the right to replace the option with another option that is comparable in look, quantity, and price without notice or prior obligation. Square footage is approximate and may vary upon elevation and/or options selected. Selection made at the Sales Appointment that change the square footage or footprint of the home are final and cannot be changed after the conclusion of the appointment. Selections made at the second Design Appointment are final and cannot be changed after the conclusion of the appointment.

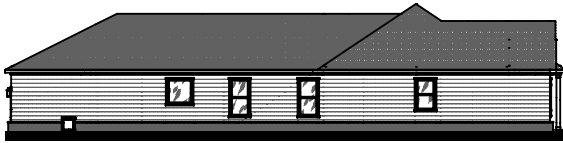




Front Elevation



Rear Elevation



Side Elevation



Side Elevation

Prices, plans, specifications, square footage, and availability are subject to change without notice or prior obligation. In the instance an option is unavailable or discontinued we have the right to replace the option with another option that is comparable in look, quantity, and price without notice or prior obligation. Square footage is approximate and may vary upon elevation and/or options selected. Selection made at the Sales Appointment that change the square footage or footprint of the home are final and cannot be changed after the conclusion of the appointment. Selections made at the second Design Appointment are final and cannot be changed after the conclusion of the appointment.

