



The 2208 Gramercy at Parkside for SHELF SPEC- PS 98 GRAMERCY A

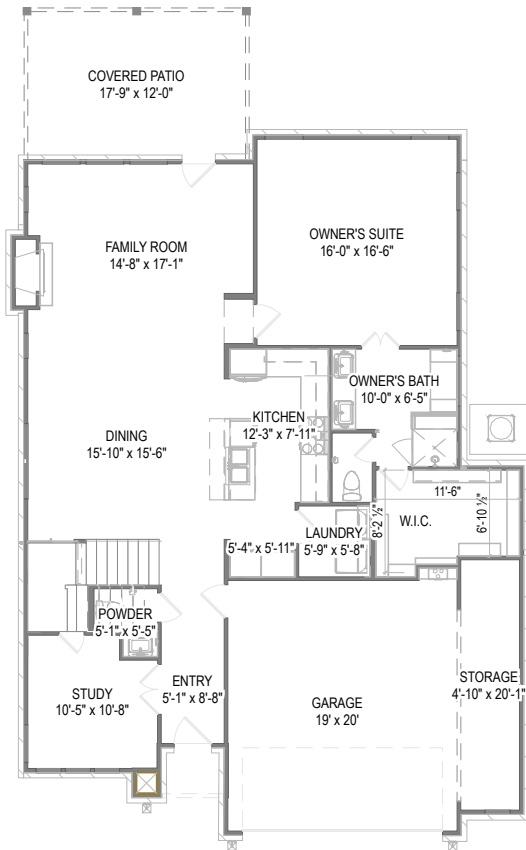
Customized on April 3, 2026 at 10:01 AM

1292 Loblolly Way

SQFT 2,626 | 4 | 3.5 | 2

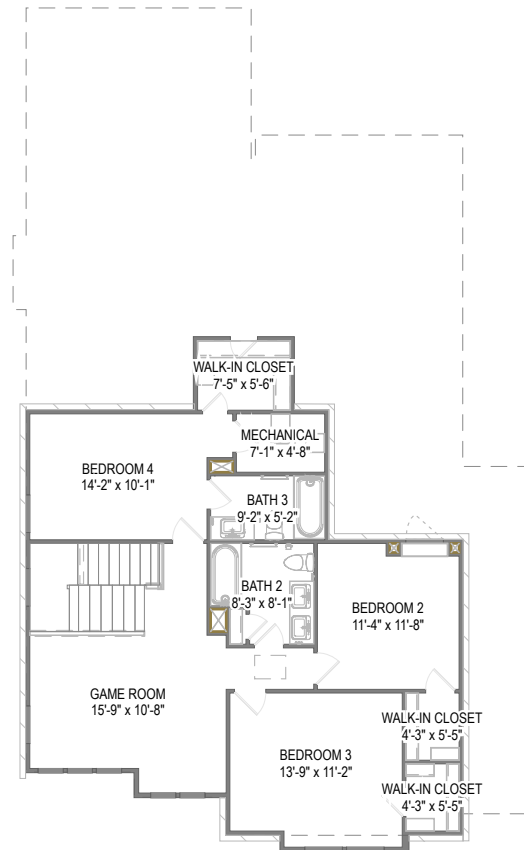
Model: **2208 Gramercy at P...**
Elevation: **Elevation A**
Lot: **98 (Phase 1)**

Your 2208 Gramercy at Parkside for SHELF SPEC- PS 98 GRAMERCY A home includes a Bed 4 with Bath 3 (+259 SF), Garage Storage, Enlarged Covered Patio and 9 other options.



©2019 FLORES ARCHITECTS 2017

First Floor



Second Floor

Prices, plans, specifications, square footage, and availability are subject to change without notice or prior obligation. In the instance an option is unavailable or discontinued we have the right to replace the option with another option that is comparable in look, quantity, and price without notice or prior obligation. Square footage is approximate and may vary upon elevation and/or options selected. Selection made at the Sales Appointment that change the square footage or footprint of the home are final and cannot be changed after the conclusion of the appointment. Selections made at the second Design Appointment are final and cannot be changed after the conclusion of the appointment.





Front Elevation



Rear Elevation



Side Elevation



Side Elevation

Prices, plans, specifications, square footage, and availability are subject to change without notice or prior obligation. In the instance an option is unavailable or discontinued we have the right to replace the option with another option that is comparable in look, quantity, and price without notice or prior obligation. Square footage is approximate and may vary upon elevation and/or options selected. Selection made at the Sales Appointment that change the square footage or footprint of the home are final and cannot be changed after the conclusion of the appointment. Selections made at the second Design Appointment are final and cannot be changed after the conclusion of the appointment.