



## The 1805 Dogwood at Parkside for PS-4 DOGWOOD SPEC

Customized on July 30, 2025

434 Fox Trail

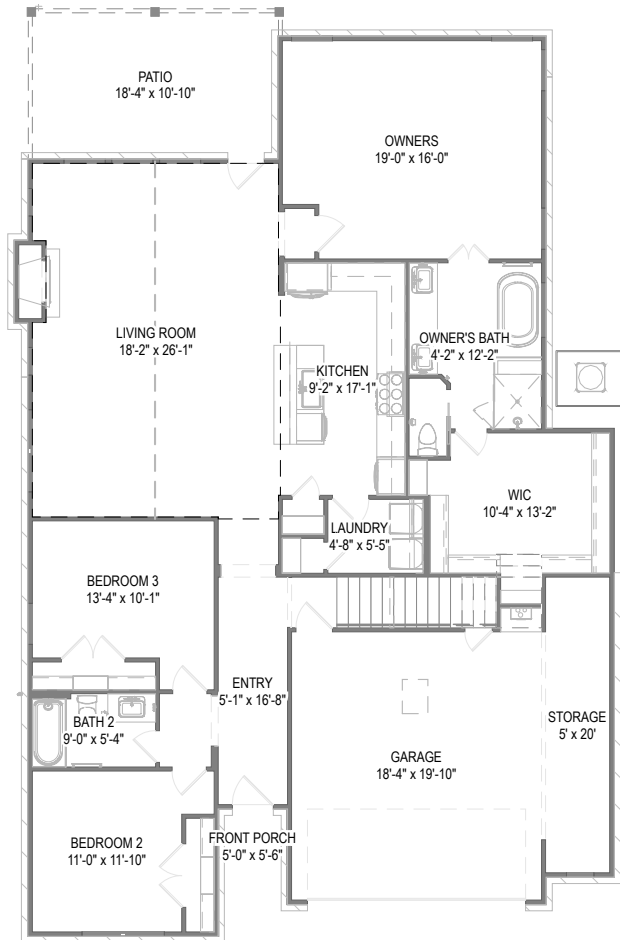
SQFT 2,727 |  4 |  3 |  2

Model: 1805 Dogwood at...

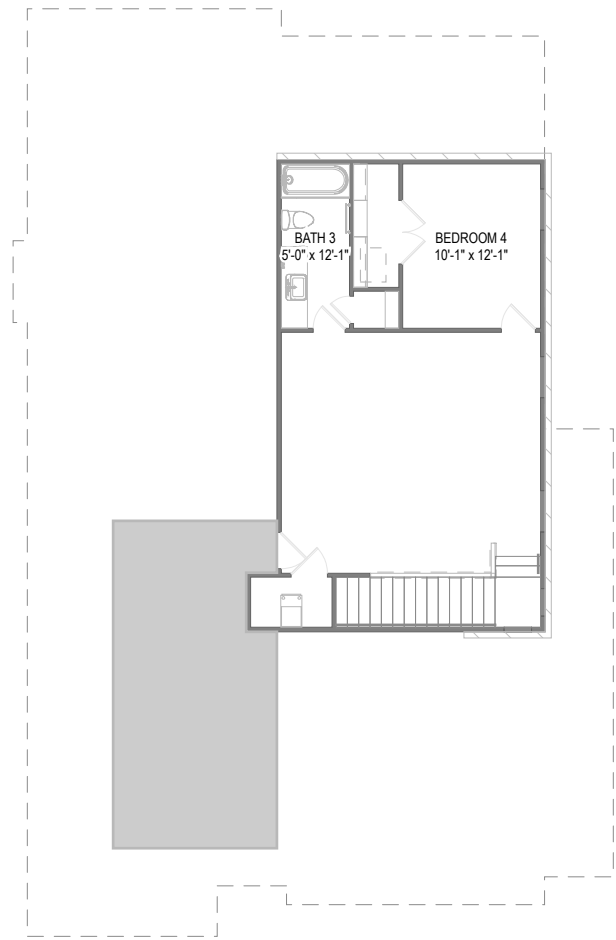
Elevation: Elevation G

Lot: 4 (Phase 1)

Your 1805 Dogwood at Parkside for PS-4 DOGWOOD SPEC home includes a Game Room with Bed 4 and Bath 3 (adds 147+/- SF), Enlarged Covered Patio, Garage Storage and 10 other options.



First Floor



Second Floor

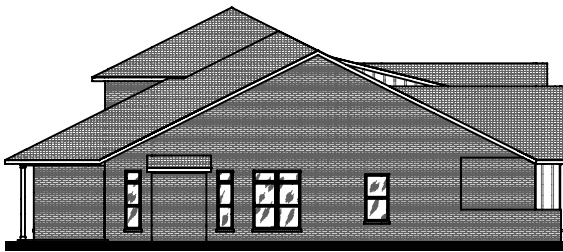
Prices, plans, specifications, square footage, and availability are subject to change without notice or prior obligation. In the instance an option is unavailable or discontinued we have the right to replace the option with another option that is comparable in look, quantity, and price without notice or prior obligation. Square footage is approximate and may vary upon elevation and/or options selected. Selection made at the Sales Appointment that change the square footage or footprint of the home are final and cannot be changed after the conclusion of the appointment. Selections made at the second Design Appointment are final and cannot be changed after the conclusion of the appointment.



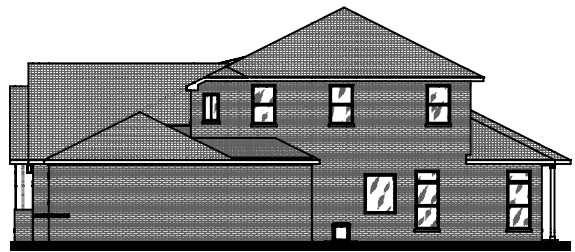
Front Elevation



Rear Elevation



Side Elevation



Side Elevation

Prices, plans, specifications, square footage, and availability are subject to change without notice or prior obligation. In the instance an option is unavailable or discontinued we have the right to replace the option with another option that is comparable in look, quantity, and price without notice or prior obligation. Square footage is approximate and may vary upon elevation and/or options selected. Selection made at the Sales Appointment that change the square footage or footprint of the home are final and cannot be changed after the conclusion of the appointment. Selections made at the second Design Appointment are final and cannot be changed after the conclusion of the appointment.

