



# The 1805 Dogwood at Parkside for PS 128 DOGWOOD SPEC A

Customized on October 14, 2024

435 Fox Trail

2,532 SQFT	3	3	2
------------	---	---	---

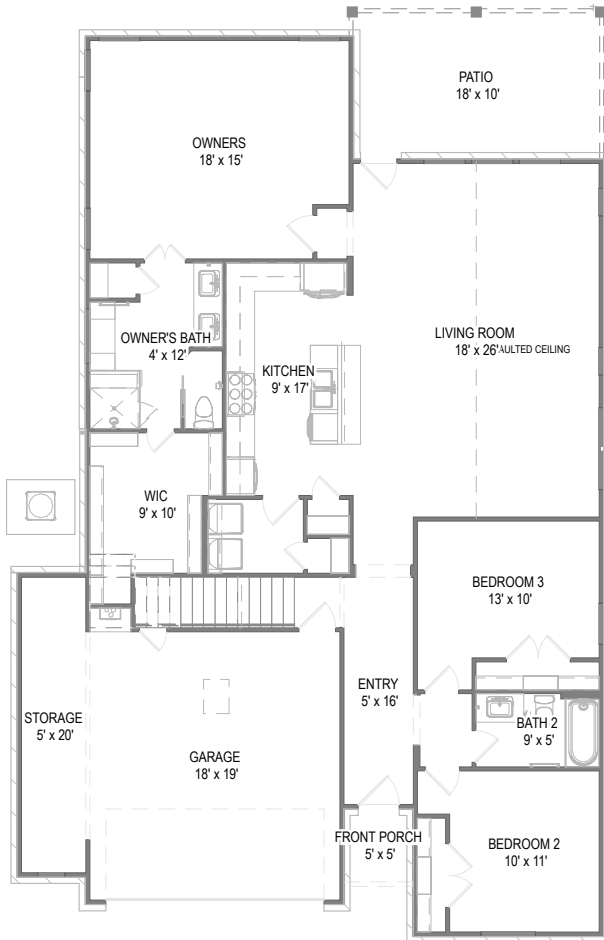
Model: 1805 Dogwood at P...

Elevation: Elevation A

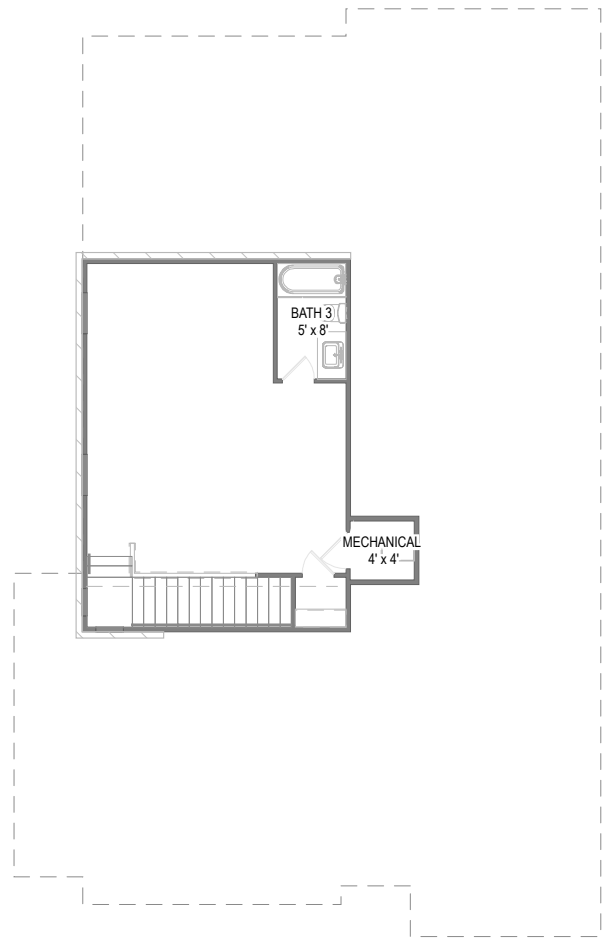
Lot: 128 (Phase 1)

Total Price: \$553,660

Your 1805 Dogwood at Parkside for PS 128 DOGWOOD SPEC A home includes a Enlarged Covered Patio, Garage Storage, Master Bedroom Extension and 8 other options.



First Floor



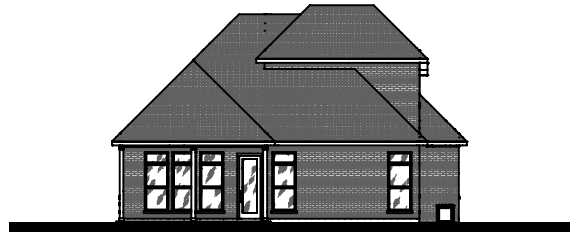
Second Floor

Prices, plans, specifications, square footage, and availability are subject to change without notice or prior obligation. In the instance an option is unavailable or discontinued we have the right to replace the option with another option that is comparable in look, quantity, and price without notice or prior obligation. Square footage is approximate and may vary upon elevation and/or options selected. Selection made at the Sales Appointment that change the square footage or footprint of the home are final and cannot be changed after the conclusion of the appointment. Selections made at the second Design Appointment are final and cannot be changed after the conclusion of the appointment.

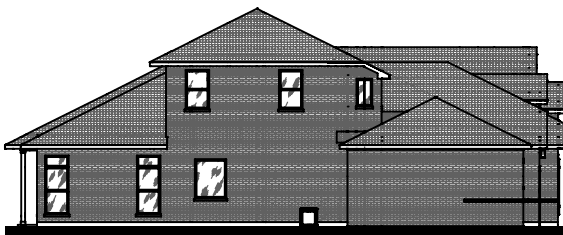




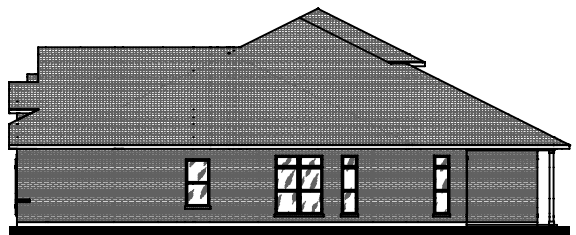
Front Elevation



Rear Elevation



Side Elevation



Side Elevation

Prices, plans, specifications, square footage, and availability are subject to change without notice or prior obligation. In the instance an option is unavailable or discontinued we have the right to replace the option with another option that is comparable in look, quantity, and price without notice or prior obligation. Square footage is approximate and may vary upon elevation and/or options selected. Selection made at the Sales Appointment that change the square footage or footprint of the home are final and cannot be changed after the conclusion of the appointment. Selections made at the second Design Appointment are final and cannot be changed after the conclusion of the appointment.

