



## The 6000 Clover at McKissic Springs East for MS 29 Clover Spec

Customized on December 9, 2025 at 1:41 PM

4703 SW Juneberry St

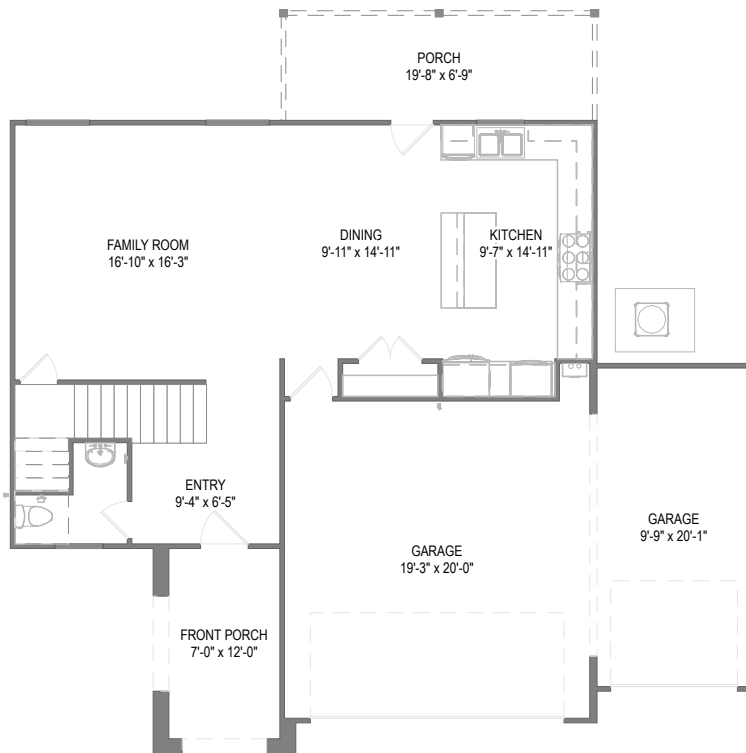
SQFT 2,037 | 3 | 2.5 | 3

Model: 6000 Clover at McK...

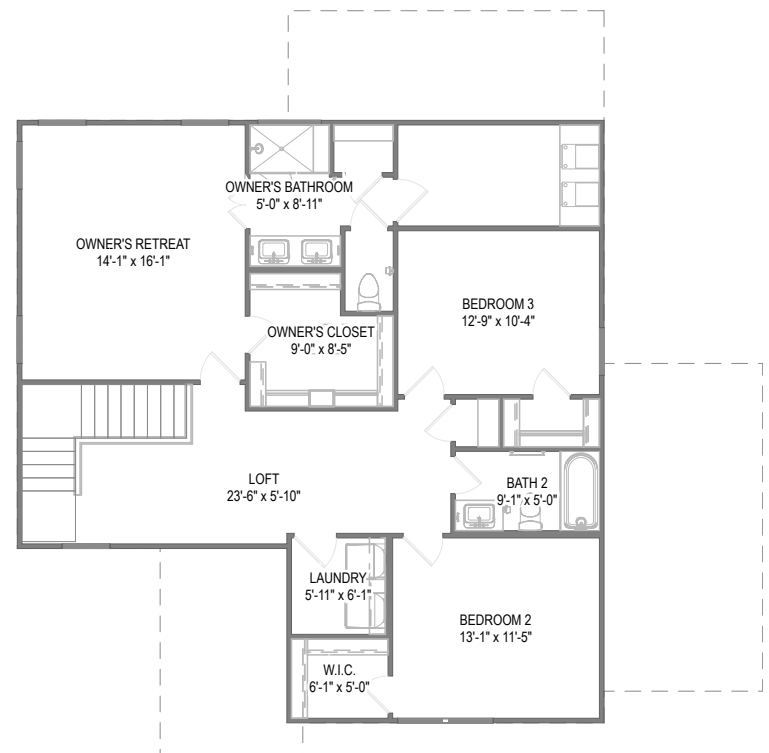
Elevation: B

Lot: 29

Your 6000 Clover at McKissic Springs East for MS 29 Clover Spec home includes a 3-Car Front Load Garage, Covered Patio, Single Oven with Cooktop and 4 other options.



First Floor



Second Floor

Prices, plans, specifications, square footage, and availability are subject to change without notice or prior obligation. In the instance an option is unavailable or discontinued we have the right to replace the option with another option that is comparable in look, quantity, and price without notice or prior obligation. Square footage is approximate and may vary upon elevation and/or options selected. Selection made at the Sales Appointment that change the square footage or footprint of the home are final and cannot be changed after the conclusion of the appointment. Selections made at the second Design Appointment are final and cannot be changed after the conclusion of the appointment.

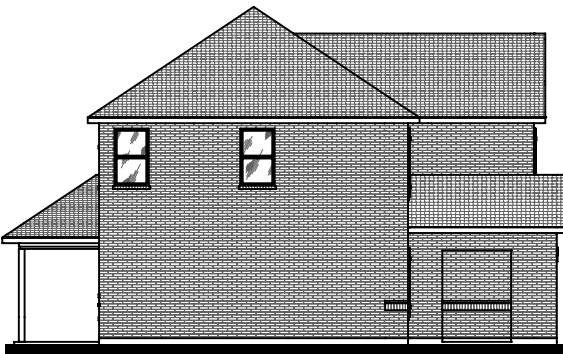




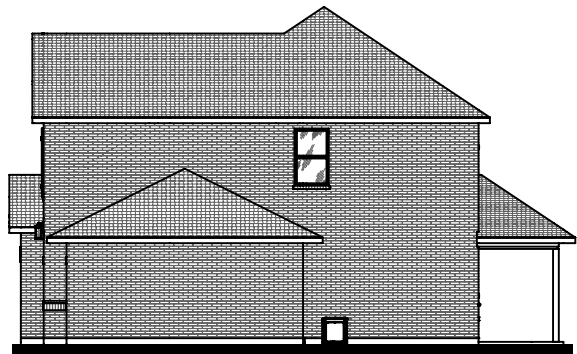
Front Elevation



Rear Elevation



Side Elevation



Side Elevation

Prices, plans, specifications, square footage, and availability are subject to change without notice or prior obligation. In the instance an option is unavailable or discontinued we have the right to replace the option with another option that is comparable in look, quantity, and price without notice or prior obligation. Square footage is approximate and may vary upon elevation and/or options selected. Selection made at the Sales Appointment that change the square footage or footprint of the home are final and cannot be changed after the conclusion of the appointment. Selections made at the second Design Appointment are final and cannot be changed after the conclusion of the appointment.