



The 6010 Ivy at McKissic Springs East for MKE 23 Veeramreddy Contract

Customized on December 15, 2025 at 2:55 PM

4803 SW Juneberry St

SQFT 2,698 | 4 | 3 | 2

Model: **6010 Ivy at McKiss...**

Elevation: **Elevation B**

Lot: **23**

Your 6010 Ivy at McKissic Springs East for MKE 23 Veeramreddy Contract home includes a Garage Storage, Bed 4 and Bath 3 ILO Dining, 4" Wall With Cap, Baluster and Handrail and 9 other options.



First Floor

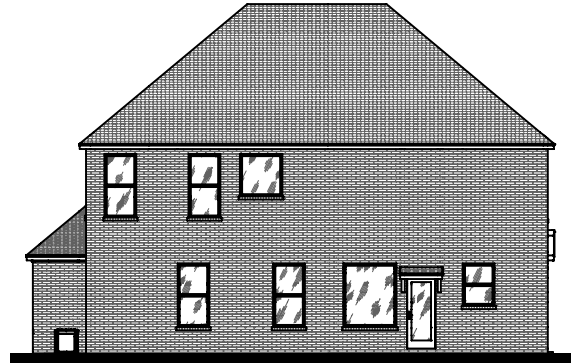
Second Floor

Prices, plans, specifications, square footage, and availability are subject to change without notice or prior obligation. In the instance an option is unavailable or discontinued we have the right to replace the option with another option that is comparable in look, quantity, and price without notice or prior obligation. Square footage is approximate and may vary upon elevation and/or options selected. Selection made at the Sales Appointment that change the square footage or footprint of the home are final and cannot be changed after the conclusion of the appointment. Selections made at the second Design Appointment are final and cannot be changed after the conclusion of the appointment.

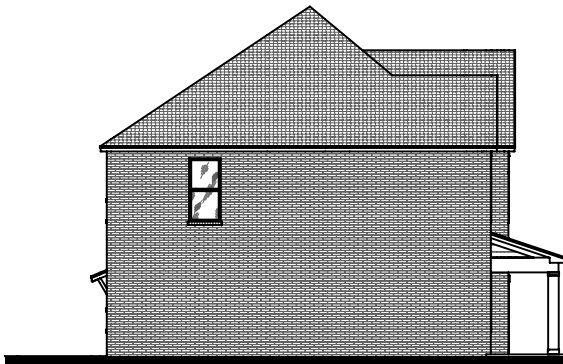




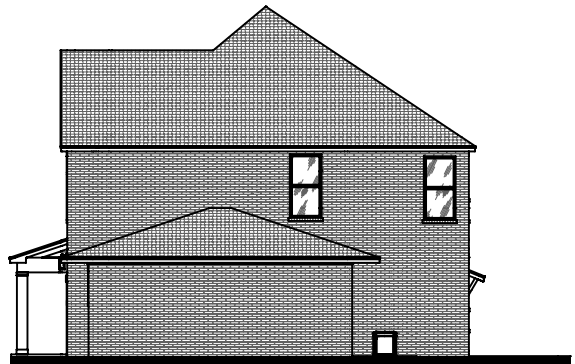
Front Elevation



Rear Elevation



Side Elevation



Side Elevation

Prices, plans, specifications, square footage, and availability are subject to change without notice or prior obligation. In the instance an option is unavailable or discontinued we have the right to replace the option with another option that is comparable in look, quantity, and price without notice or prior obligation. Square footage is approximate and may vary upon elevation and/or options selected. Selection made at the Sales Appointment that change the square footage or footprint of the home are final and cannot be changed after the conclusion of the appointment. Selections made at the second Design Appointment are final and cannot be changed after the conclusion of the appointment.

