



# The 8000 Anniston at Evening Star Phase 1

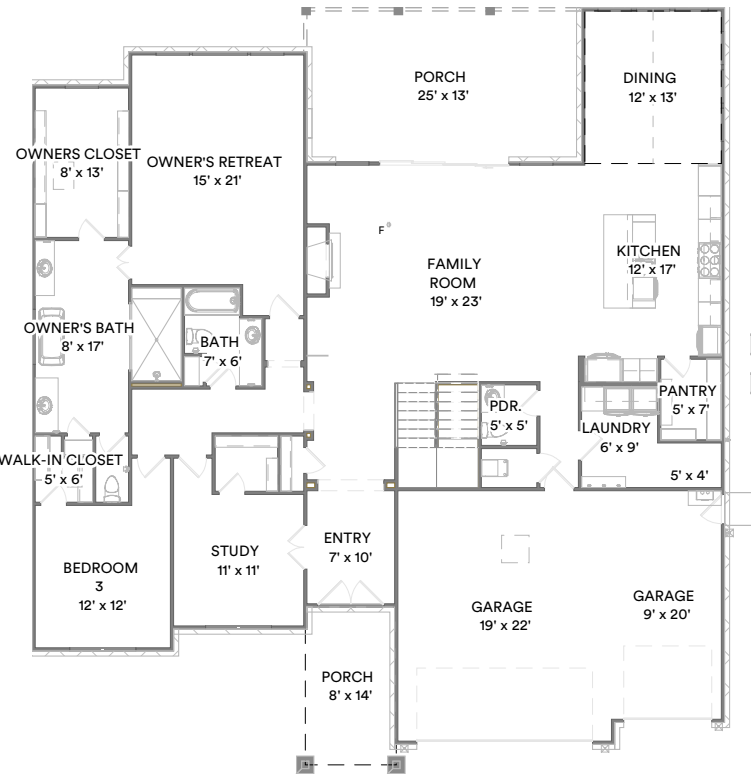
Customized on April 22, 2024

8901 STARRY NIGHT DRIVE

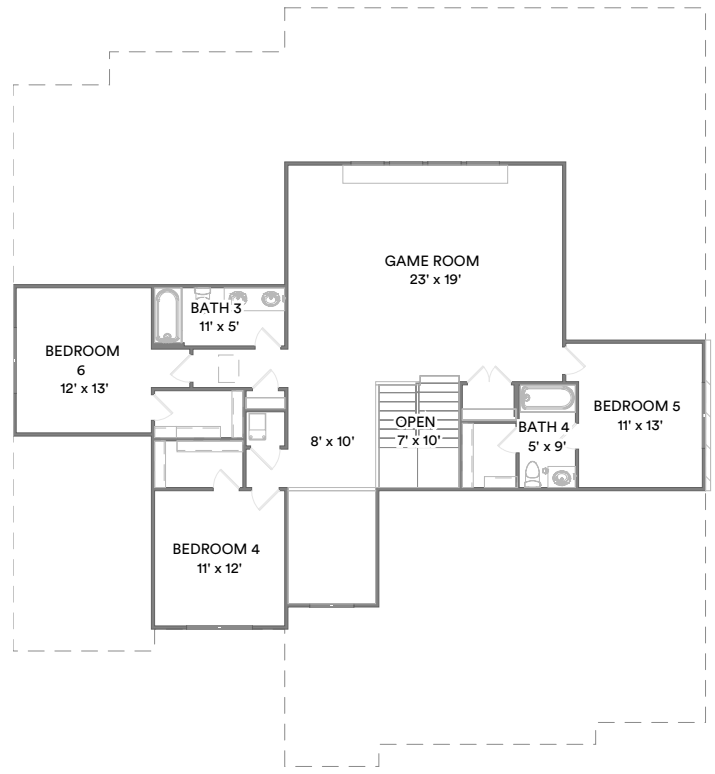
4,430 SQFT | 5 | 4.5 | 3

Model:	<b>8000 Anniston at ...</b>	Base Price:	<b>\$881,000</b>
Elevation:	<b>D</b>	Options:	<b>\$219,232</b>
Lot:	<b>4</b>	Lot Premium:	--
Total Price:	<b>\$1,100,232</b>	Discounts:	--

Your 8000 Anniston at Evening Star Phase 1 home includes a Enlarged Game Room with Bed 5 and Bath 4 (+466 SF), Bed 6, D and 21 other options.



First Floor



Second Floor

Prices, plans, specifications, square footage, and availability are subject to change without notice or prior obligation. In the instance an option is unavailable or discontinued we have the right to replace the option with another option that is comparable in look, quantity, and price without notice or prior obligation. Square footage is approximate and may vary upon elevation and/or options selected. Selection made at the Sales Appointment that change the square footage or footprint of the home are final and cannot be changed after the conclusion of the appointment. Selections made at the second Design Appointment are final and cannot be changed after the conclusion of the appointment.

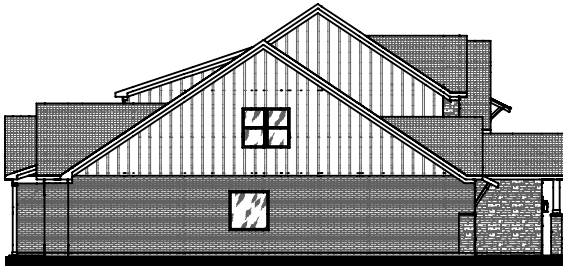




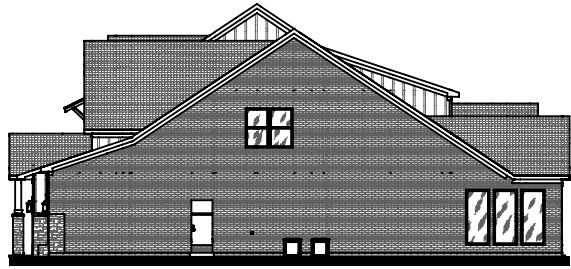
Front Elevation



Rear Elevation



Side Elevation



Side Elevation

Prices, plans, specifications, square footage, and availability are subject to change without notice or prior obligation. In the instance an option is unavailable or discontinued we have the right to replace the option with another option that is comparable in look, quantity, and price without notice or prior obligation. Square footage is approximate and may vary upon elevation and/or options selected. Selection made at the Sales Appointment that change the square footage or footprint of the home are final and cannot be changed after the conclusion of the appointment. Selections made at the second Design Appointment are final and cannot be changed after the conclusion of the appointment.

