



The 2900 Monroe at Evening Star Phase 1 for ES 32 MONROE C SPEC

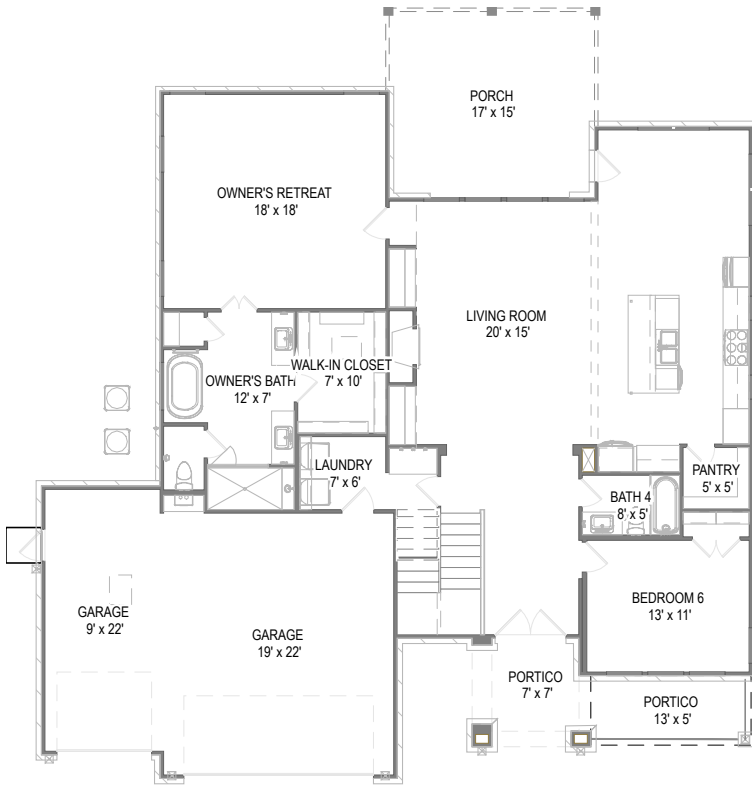
Customized for ES 32 MONROE SPEC on June 28, 2024

4210 S 88TH ST

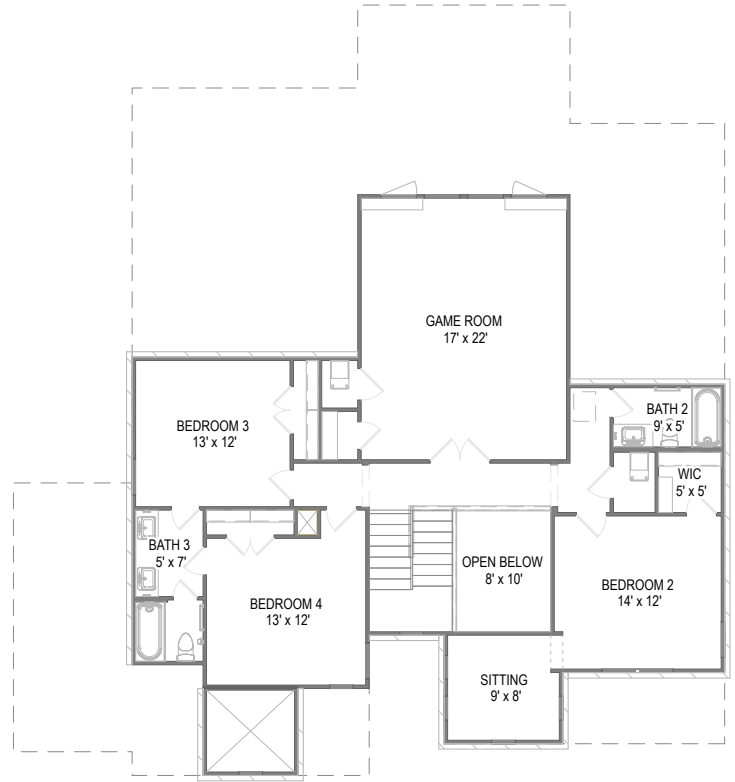
3,680 SQFT | 5 | 4 | 3

Model:	2900 Monroe at Ev...	Base Price:
Elevation:	Elevation C	Options:
lot:	32	Lot Premium: --
Total Price		Adjustments: --

Your 2900 Monroe at Evening Star Phase 1 for ES 32 MONROE C SPEC home includes a Enlarged Game Room (adds 215+/- SF) , Elevation C, Enlarged Covered Patio and 15 other options.



First Floor



Second Floor

Prices, plans, specifications, square footage, and availability are subject to change without notice or prior obligation. In the instance an option is unavailable or discontinued we have the right to replace the option with another option that is comparable in look, quantity, and price without notice or prior obligation. Square footage is approximate and may vary upon elevation and/or options selected. Selection made at the Sales Appointment that change the square footage or footprint of the home are final and cannot be changed after the conclusion of the appointment. Selections made at the second Design Appointment are final and cannot be changed after the conclusion of the appointment.

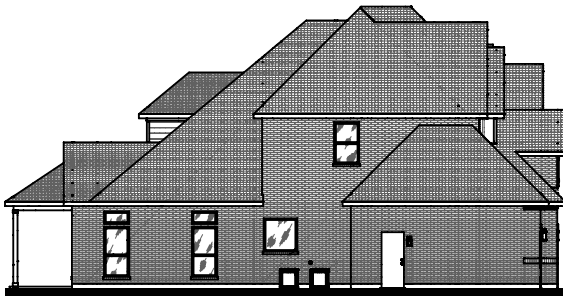




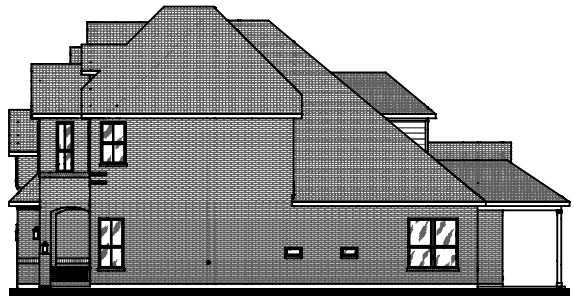
Front Elevation



Rear Elevation



Side Elevation



Side Elevation

Prices, plans, specifications, square footage, and availability are subject to change without notice or prior obligation. In the instance an option is unavailable or discontinued we have the right to replace the option with another option that is comparable in look, quantity, and price without notice or prior obligation. Square footage is approximate and may vary upon elevation and/or options selected. Selection made at the Sales Appointment that change the square footage or footprint of the home are final and cannot be changed after the conclusion of the appointment. Selections made at the second Design Appointment are final and cannot be changed after the conclusion of the appointment.

