



# The 8000 Anniston at Evening Star Phase 1 for ES 15 Anniston Spec

Customized on October 18, 2024

4201 88TH ST

3,945 SQFT | 4 | 3.5 | 3

Model: 8000 Anniston a...

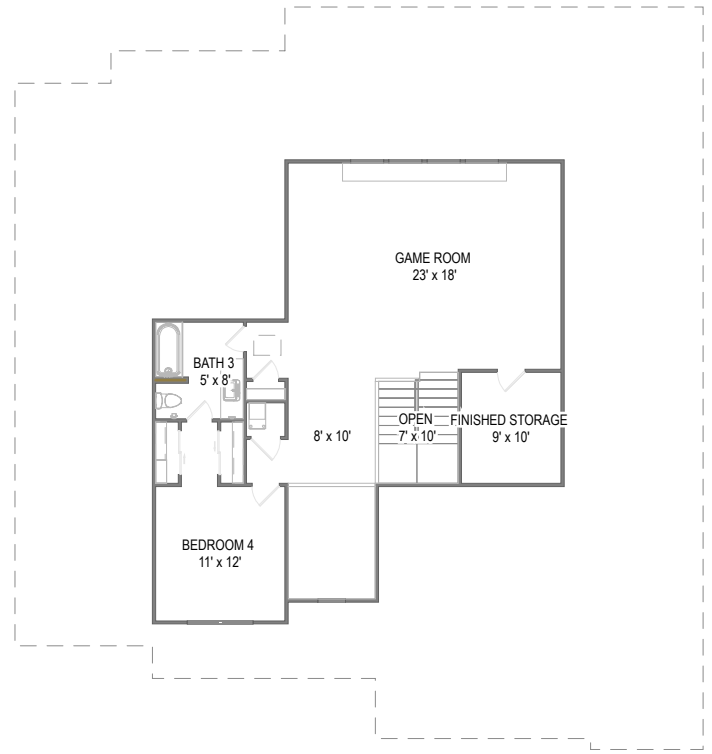
Elevation: A

Lot: 15 (Phase 1)

Your 8000 Anniston at Evening Star Phase 1 for ES 15 Anniston Spec home includes a Enlarged Game Room (adds 286+/- SF) , A, Sliding Glass Door and 11 other options.



First Floor



Second Floor

Prices, plans, specifications, square footage, and availability are subject to change without notice or prior obligation. In the instance an option is unavailable or discontinued we have the right to replace the option with another option that is comparable in look, quantity, and price without notice or prior obligation. Square footage is approximate and may vary upon elevation and/or options selected. Selection made at the Sales Appointment that change the square footage or footprint of the home are final and cannot be changed after the conclusion of the appointment. Selections made at the second Design Appointment are final and cannot be changed after the conclusion of the appointment.

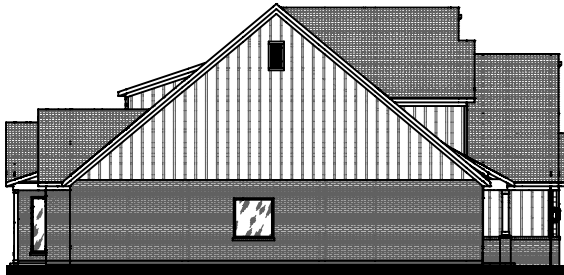




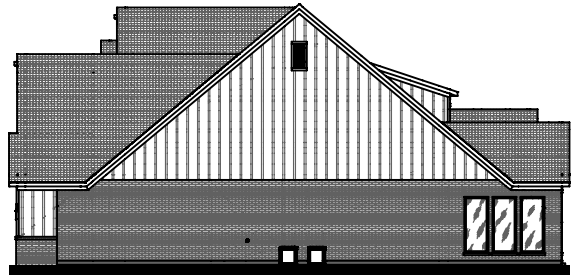
Front Elevation



Rear Elevation



Side Elevation



Side Elevation

Prices, plans, specifications, square footage, and availability are subject to change without notice or prior obligation. In the instance an option is unavailable or discontinued we have the right to replace the option with another option that is comparable in look, quantity, and price without notice or prior obligation. Square footage is approximate and may vary upon elevation and/or options selected. Selection made at the Sales Appointment that change the square footage or footprint of the home are final and cannot be changed after the conclusion of the appointment. Selections made at the second Design Appointment are final and cannot be changed after the conclusion of the appointment.

