



## The 2208 Gramercy at Blossom Woods Phase 1 for BW-76 GRAMERCY SPEC

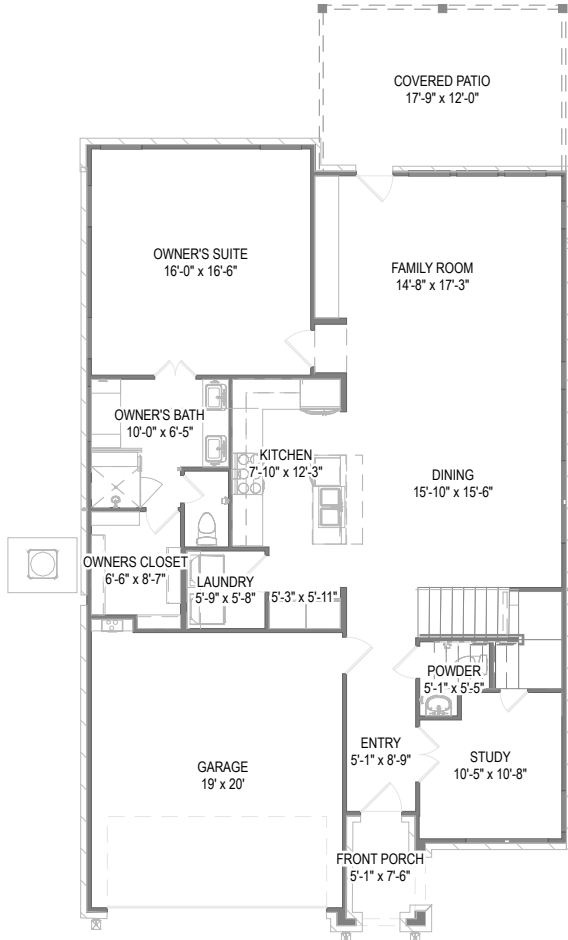
Customized on June 24, 2025

3003 S. 14th Street

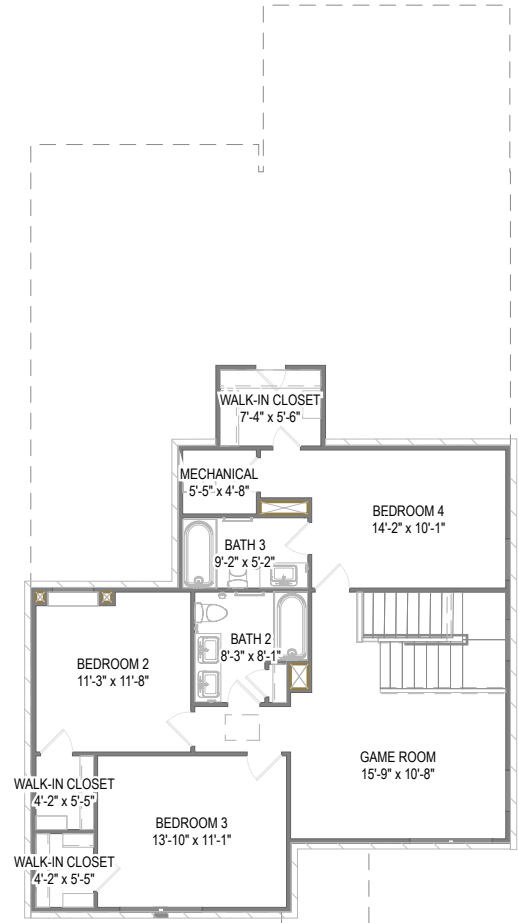
SQFT 2,606 | 4 | 3.5 | 2

Model: **2208 Gramercy a...** Lot: **76**  
Elevation: **Elevation C** Options: **9**

Your 2208 Gramercy at Blossom Woods Phase 1 for BW-76 GRAMERCY SPEC home includes a Bed 4 with Bath 3 (+259 SF), Enlarged Covered Patio, Master Bed Extension and 6 other options.



First Floor



Second Floor

Prices, plans, specifications, square footage, and availability are subject to change without notice or prior obligation. In the instance an option is unavailable or discontinued we have the right to replace the option with another option that is comparable in look, quantity, and price without notice or prior obligation. Square footage is approximate and may vary upon elevation and/or options selected. Selection made at the Sales Appointment that change the square footage or footprint of the home are final and cannot be changed after the conclusion of the appointment. Selections made at the second Design Appointment are final and cannot be changed after the conclusion of the appointment.





## 9 Options added to your 2208 Gramercy at Blossom Woods Phase 1 for BW-76 GRAMERCY SPEC:

Elevation - Elevation C

Stair Options - 4" Wall With Cap, Baluster and Handrail

2nd Floor Layout - Bed 4 with Bath 3 (+259 SF)

Transoms at Family Room - Optional Transoms at Family Room

Master Bed Extension (adds 35+/- SF) - Master Bed Extension

Covered Patio - Enlarged Covered Patio

Built-Ins at Family - Built-In Cabinets

Kitchen Cabinets to Ceiling - Kitchen Cabinets to Ceiling

Kitchen Layout - Single Oven with Cooktop

Prices, plans, specifications, square footage, and availability are subject to change without notice or prior obligation. In the instance an option is unavailable or discontinued we have the right to replace the option with another option that is comparable in look, quantity, and price without notice or prior obligation. Square footage is approximate and may vary upon elevation and/or options selected. Selection made at the Sales Appointment that change the square footage or footprint of the home are final and cannot be changed after the conclusion of the appointment. Selections made at the second Design Appointment are final and cannot be changed after the conclusion of the appointment.

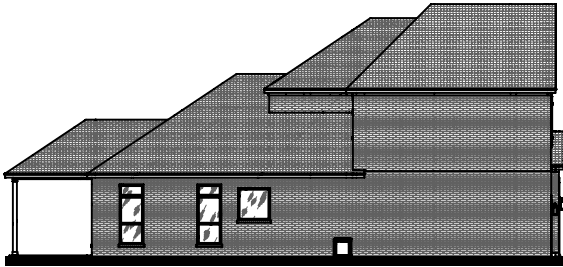




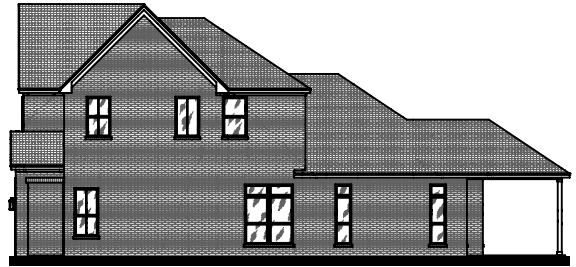
Front Elevation



Rear Elevation



Side Elevation



Side Elevation

Prices, plans, specifications, square footage, and availability are subject to change without notice or prior obligation. In the instance an option is unavailable or discontinued we have the right to replace the option with another option that is comparable in look, quantity, and price without notice or prior obligation. Square footage is approximate and may vary upon elevation and/or options selected. Selection made at the Sales Appointment that change the square footage or footprint of the home are final and cannot be changed after the conclusion of the appointment. Selections made at the second Design Appointment are final and cannot be changed after the conclusion of the appointment.

