



# The 7005 Lavender at Blossom Woods Phase 1

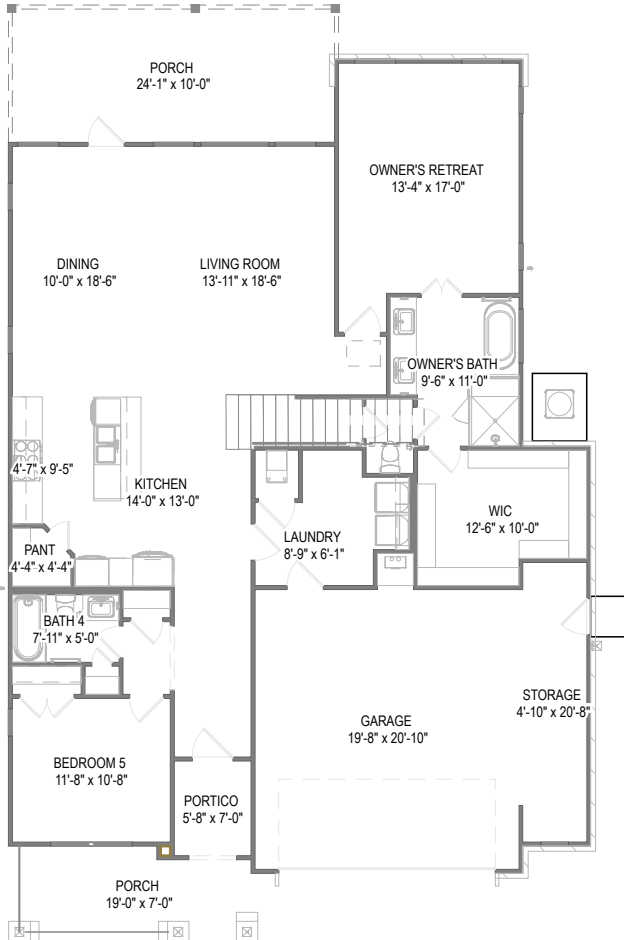
Customized on December 30, 2024

3008 S. 14th Place

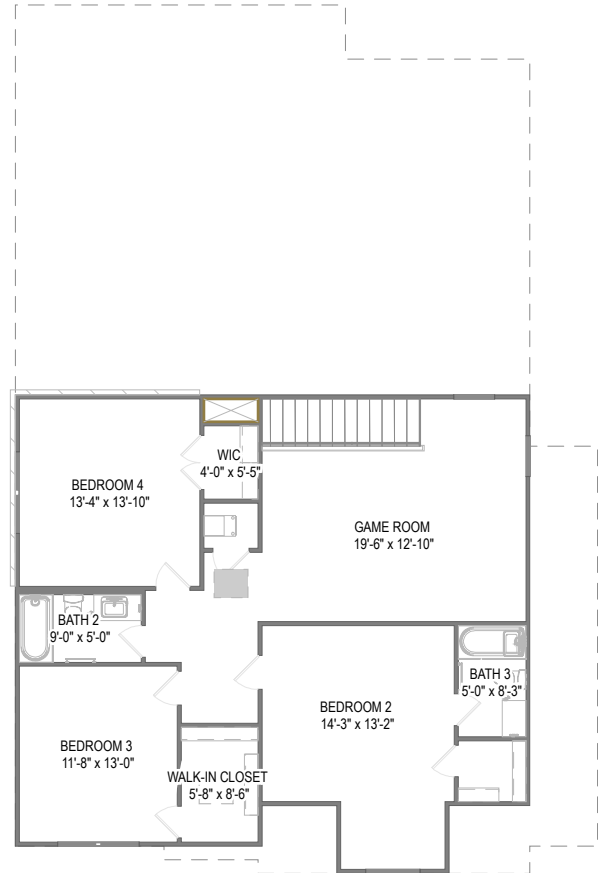
2,956 SQFT	5	4	2
------------	---	---	---

Model:	7005 Lavender a...	Base Price:
Elevation:	B	Options:
Lot:	28	Lot Premium: \$15,000
Total Price:		Adjustments: --

Your 7005 Lavender at Blossom Woods Phase 1 home includes a Bed 4 with Bath 3 (adds 264+/- SF) , Enlarged Covered Patio, Garage Storage and 11 other options.



First Floor



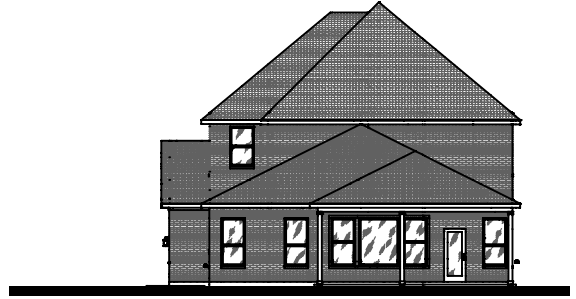
Second Floor

Prices, plans, specifications, square footage, and availability are subject to change without notice or prior obligation. In the instance an option is unavailable or discontinued we have the right to replace the option with another option that is comparable in look, quantity, and price without notice or prior obligation. Square footage is approximate and may vary upon elevation and/or options selected. Selection made at the Sales Appointment that change the square footage or footprint of the home are final and cannot be changed after the conclusion of the appointment. Selections made at the second Design Appointment are final and cannot be changed after the conclusion of the appointment.

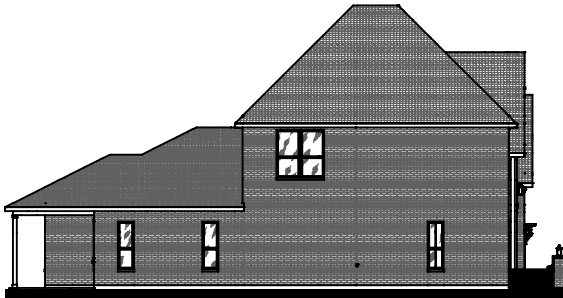




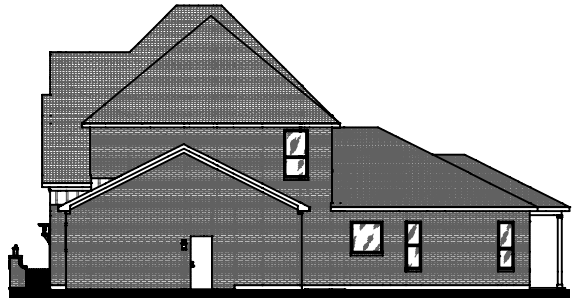
Front Elevation



Rear Elevation



Side Elevation



Side Elevation

Prices, plans, specifications, square footage, and availability are subject to change without notice or prior obligation. In the instance an option is unavailable or discontinued we have the right to replace the option with another option that is comparable in look, quantity, and price without notice or prior obligation. Square footage is approximate and may vary upon elevation and/or options selected. Selection made at the Sales Appointment that change the square footage or footprint of the home are final and cannot be changed after the conclusion of the appointment. Selections made at the second Design Appointment are final and cannot be changed after the conclusion of the appointment.

