



The 2208 Gramercy at BW 27- SPEC

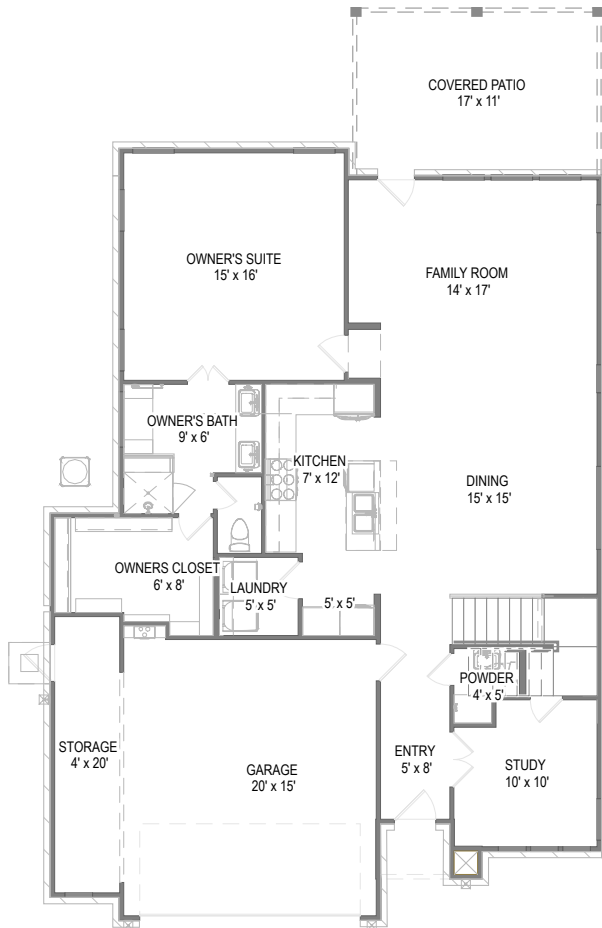
Customized on July 12, 2024

3009 S. 15th Street

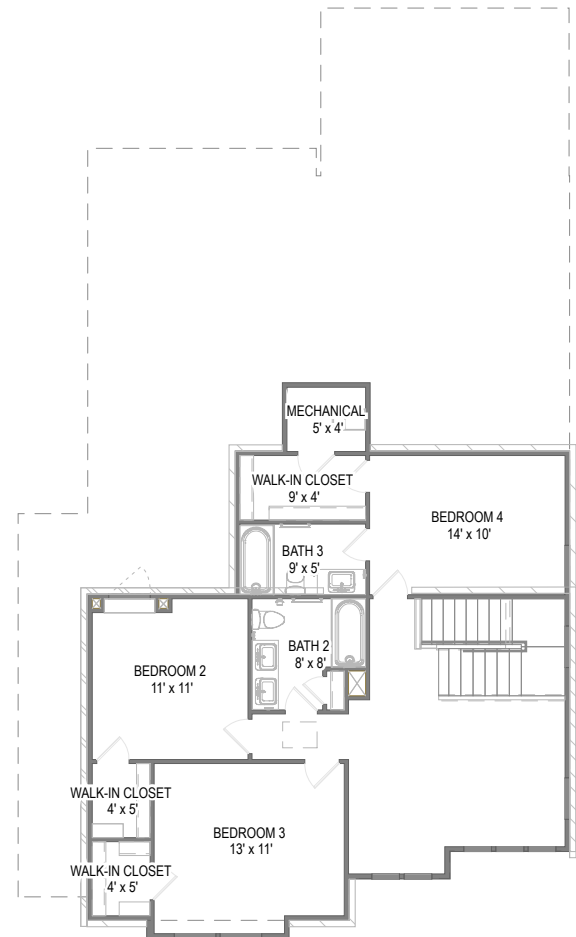
2,652 SQFT 4 3.5 2

Model: **2208 Gramercy at ...**
Elevation: **Elevation A**
lot: **27**

Your 2208 Gramercy at Blossom Woods Phase 1 for BW 27- SPEC- GRAMERCY-A home includes a Bed 4 with Bath 3 (+259 SF), Garage Storage, Enlarged Covered Patio and 11 other options.



First Floor



Second Floor

Prices, plans, specifications, square footage, and availability are subject to change without notice or prior obligation. In the instance an option is discontinued we have the right to replace the option with another option that is comparable in look, quantity, and price without notice or prior obligation. Square footage is approximate and may vary upon elevation and/or options selected. Selection made at the Sales Appointment that change the square footage or footprint of the home are final and cannot be changed after the conclusion of the appointment. Selections made at the second Design Appointment are final and cannot be changed after the conclusion of the appointment.





Front Elevation



Rear Elevation



Side Elevation



Side Elevation

Prices, plans, specifications, square footage, and availability are subject to change without notice or prior obligation. In the instance an option is unavailable or discontinued we have the right to replace the option with another option that is comparable in look, quantity, and price without notice or prior obligation. Square footage is approximate and may vary upon elevation and/or options selected. Selection made at the Sales Appointment that change the square footage or footprint of the home are final and cannot be changed after the conclusion of the appointment. Selections made at the second Design Appointment are final and cannot be changed after the conclusion of the appointment.

