



The 1805 Dogwood at Blossom Woods BW 26

Customized on August 1, 202

3007 S. 15th Street

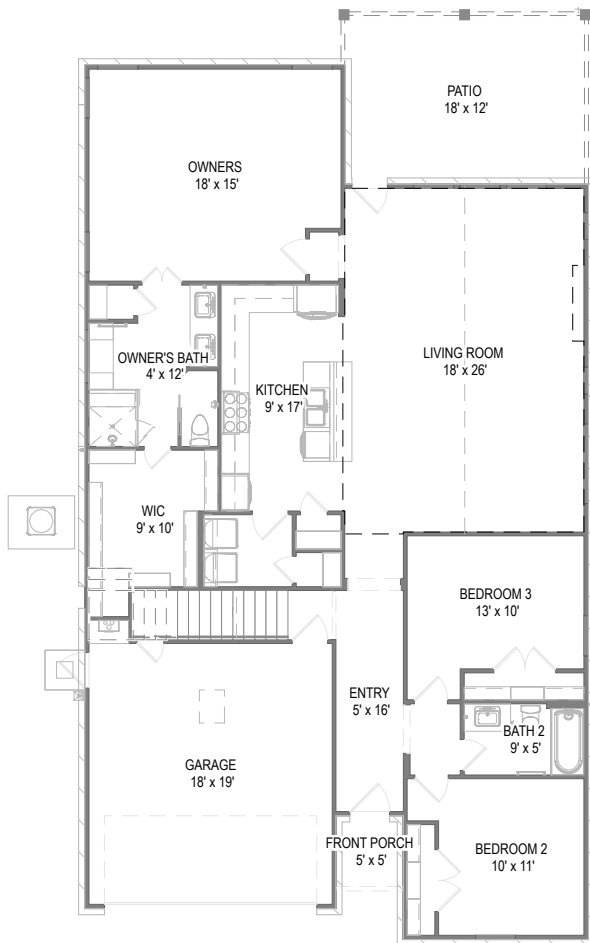
2,681 SQFT	4	3	2
------------	---	---	---

Model: **1805 Dogwood at B...**

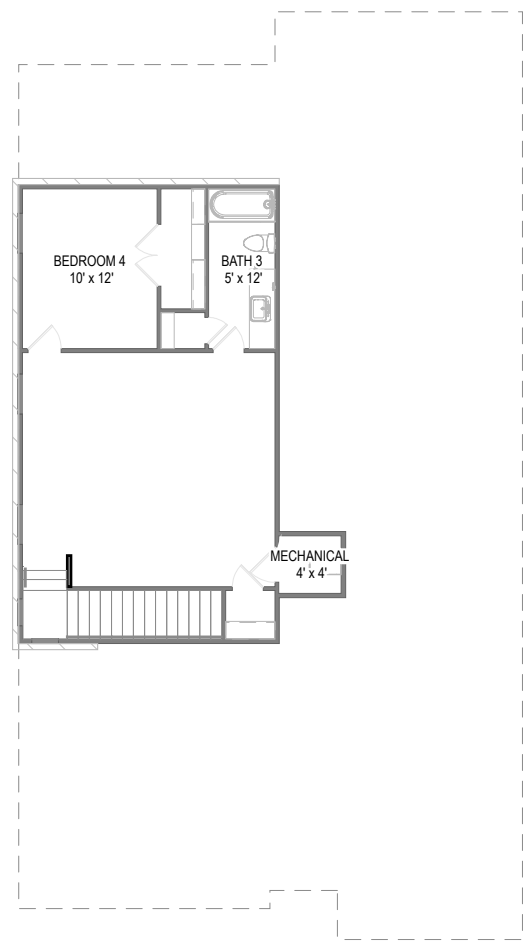
Elevation: **Elevation C**

lot: **26**

Your 1805 Dogwood at Blossom Woods Phase 1 for BW 26- SPEC- DOGWOOD B home includes a Game Room with Bed 4 and Bath 3 (adds 147+/- SF), Enlarged Covered Patio, Master Bedroom Extension and 9 other options.



First Floor



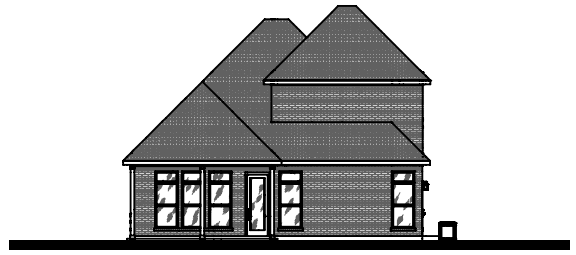
Second Floor

Prices, plans, specifications, square footage, and availability are subject to change without notice or prior obligation. In the instance an option is discontinued we have the right to replace the option with another option that is comparable in look, quantity, and price without notice or prior obligation. Square footage is approximate and may vary upon elevation and/or options selected. Selection made at the Sales Appointment that change the square footage or footprint of the home are final and cannot be changed after the conclusion of the appointment. Selections made at the second Design Appointment are final and cannot be changed after the conclusion of the appointment.

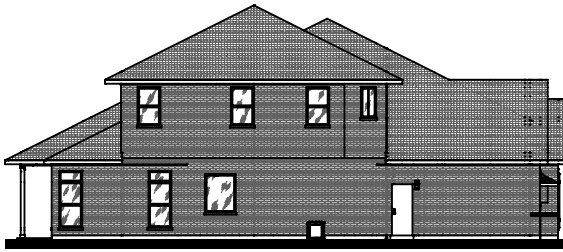




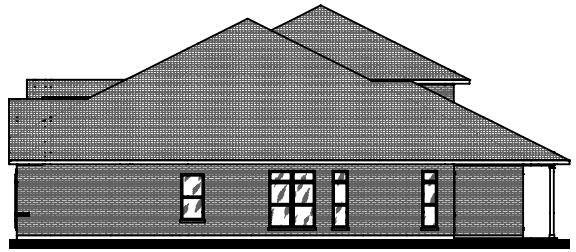
Front Elevation



Rear Elevation



Side Elevation



Side Elevation

Prices, plans, specifications, square footage, and availability are subject to change without notice or prior obligation. In the instance an option is unavailable or discontinued we have the right to replace the option with another option that is comparable in look, quantity, and price without notice or prior obligation. Square footage is approximate and may vary upon elevation and/or options selected. Selection made at the Sales Appointment that change the square footage or footprint of the home are final and cannot be changed after the conclusion of the appointment. Selections made at the second Design Appointment are final and cannot be changed after the conclusion of the appointment.

