



The 1895 Easton at Blossom Woods BW 23- SPEC- EASTON

Customized on July 25, 2024

3001 S. 15th Street

2,046 SQFT 3 2.5 2

Model: 1895 Easton at Bl...

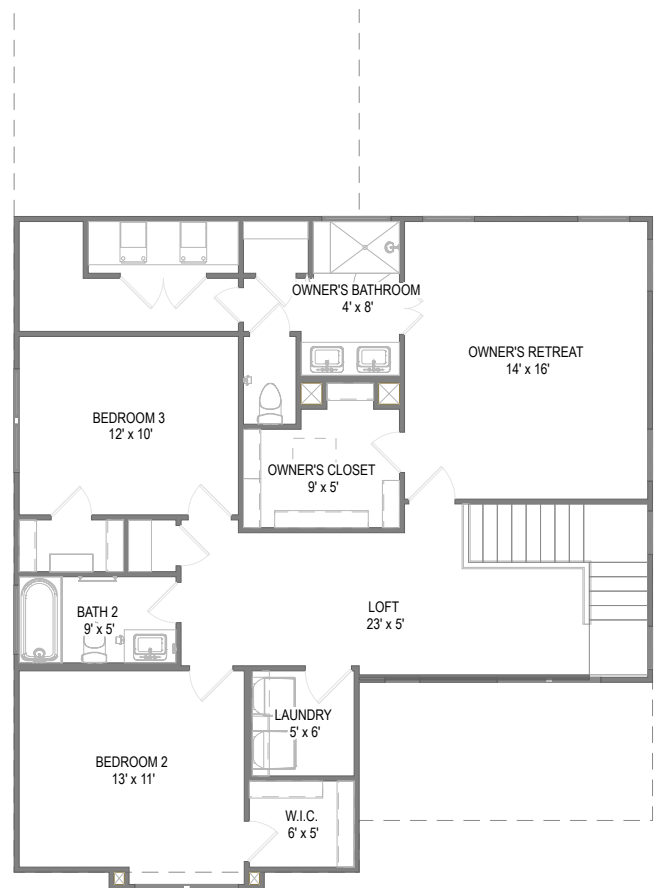
Elevation: C

lot: 23

Your 1895 Easton at Blossom Woods Phase 1 for BW 23- SPEC- EASTON SPEC home includes a Enlarged Covered Patio, Single Oven with Cooktop, 4" Wall With Cap, Baluster and Handrail and 7 other options.



First Floor



Second Floor

Prices, plans, specifications, square footage, and availability are subject to change without notice or prior obligation. In the instance an option is unavailable or discontinued we have the right to replace the option with another option that is comparable in look, quantity, and price without notice or prior obligation. Square footage is approximate and may vary upon elevation and/or options selected. Selection made at the Sales Appointment that change the square footage or footprint of the home are final and cannot be changed after the conclusion of the appointment. Selections made at the second Design Appointment are final and cannot be changed after the conclusion of the appointment.

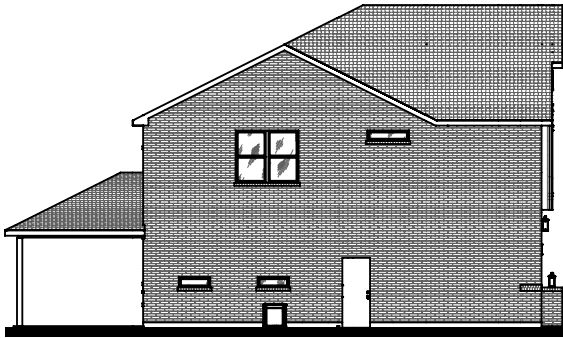




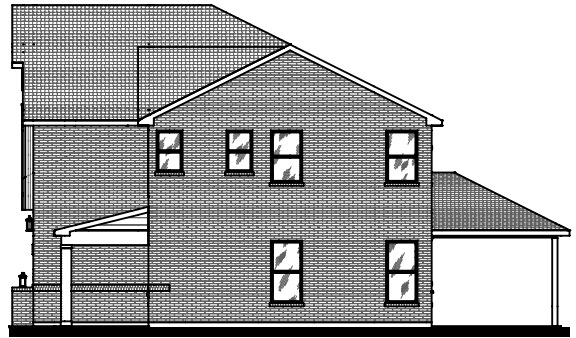
Front Elevation



Rear Elevation



Side Elevation



Side Elevation

Prices, plans, specifications, square footage, and availability are subject to change without notice or prior obligation. In the instance an option is unavailable or discontinued we have the right to replace the option with another option that is comparable in look, quantity, and price without notice or prior obligation. Square footage is approximate and may vary upon elevation and/or options selected. Selection made at the Sales Appointment that change the square footage or footprint of the home are final and cannot be changed after the conclusion of the appointment. Selections made at the second Design Appointment are final and cannot be changed after the conclusion of the appointment.

