

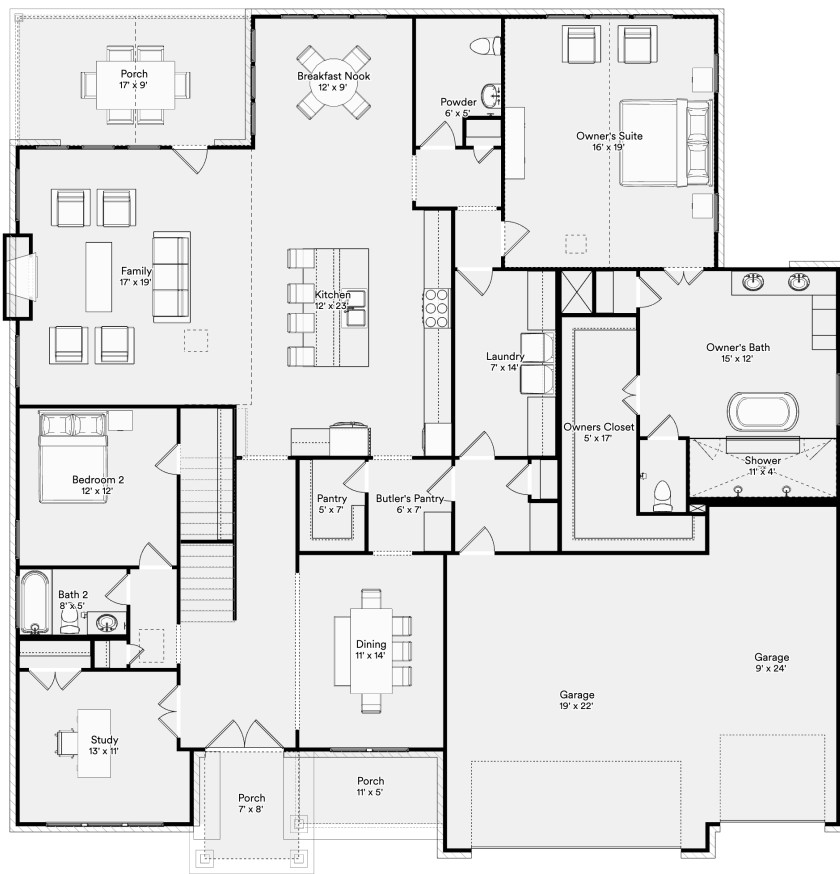


# The 8005 Eleanor

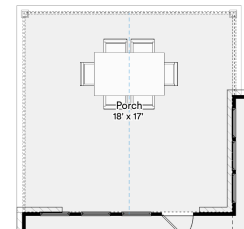
Ready to build a life you'll love

4,489+ SQFT | 5+ | 4.5+ | 3

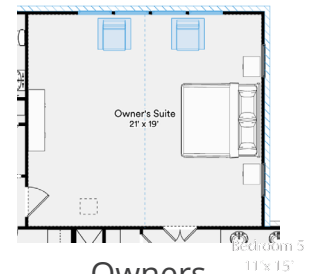
Model: Eleanor Base Price: --  
 Elevation: B,C Options: --  
 Lot: -- Lot Premium: --  
 Total Price: --



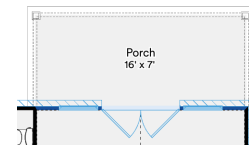
**First Floor**



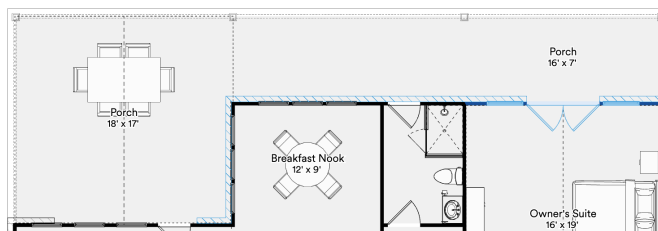
**Enlarged Covered Patio**



**Owners Extension**



**Patio at Owner's Suite**

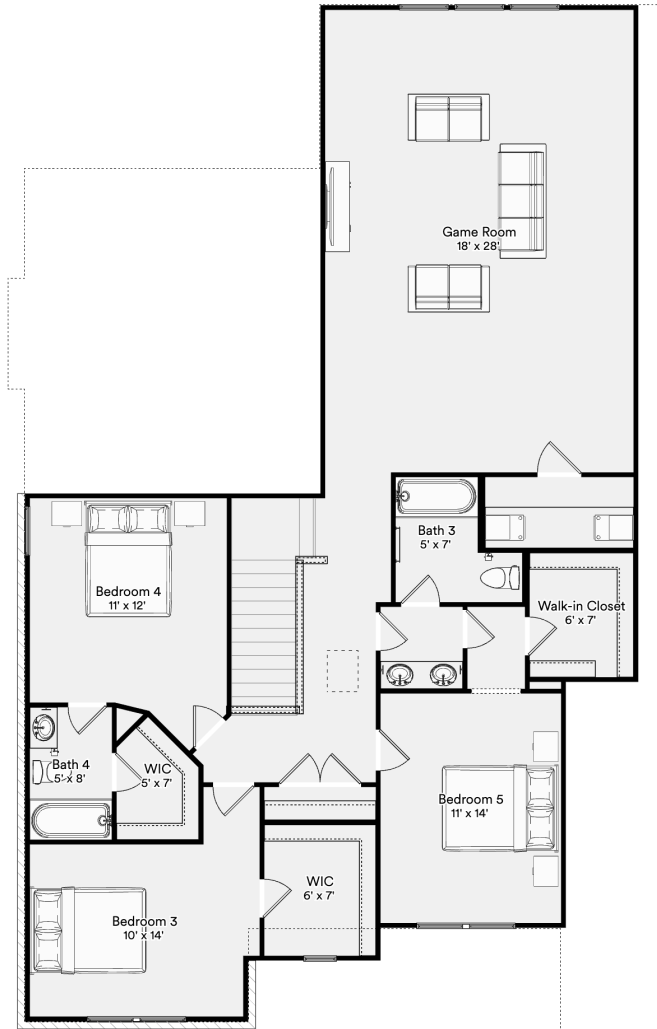


**Enlarged Covered Patio with Pool Bath and Patio at Owner's Suite**

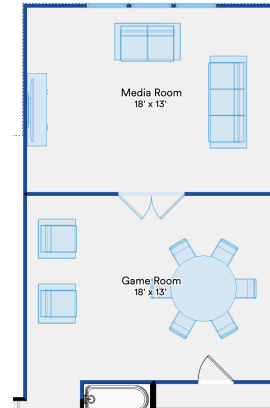
Prices, plans, specifications, square footage, and availability are subject to change without notice or prior obligation. In the instance an option is unavailable or discontinued we have the right to replace the option with another option that is comparable in look, quantity, and price without notice or prior obligation. Square footage is approximate and may vary upon elevation and/or options selected. Selections made at the second Design Appointment are final and cannot be changed after the conclusion of the appointment.



# The 8005 Eleanor



Second Floor



Media Room



Bed 6 with Bath 5

Prices, plans, specifications, square footage, and availability are subject to change without notice or prior obligation. In the instance an option is unavailable or discontinued we have the right to replace the option with another option that is comparable in look, quantity, and price without notice or prior obligation. Square footage is approximate and may vary upon elevation and/or options selected. Selections made at the second Design Appointment are final and cannot be changed after the conclusion of the appointment.

