

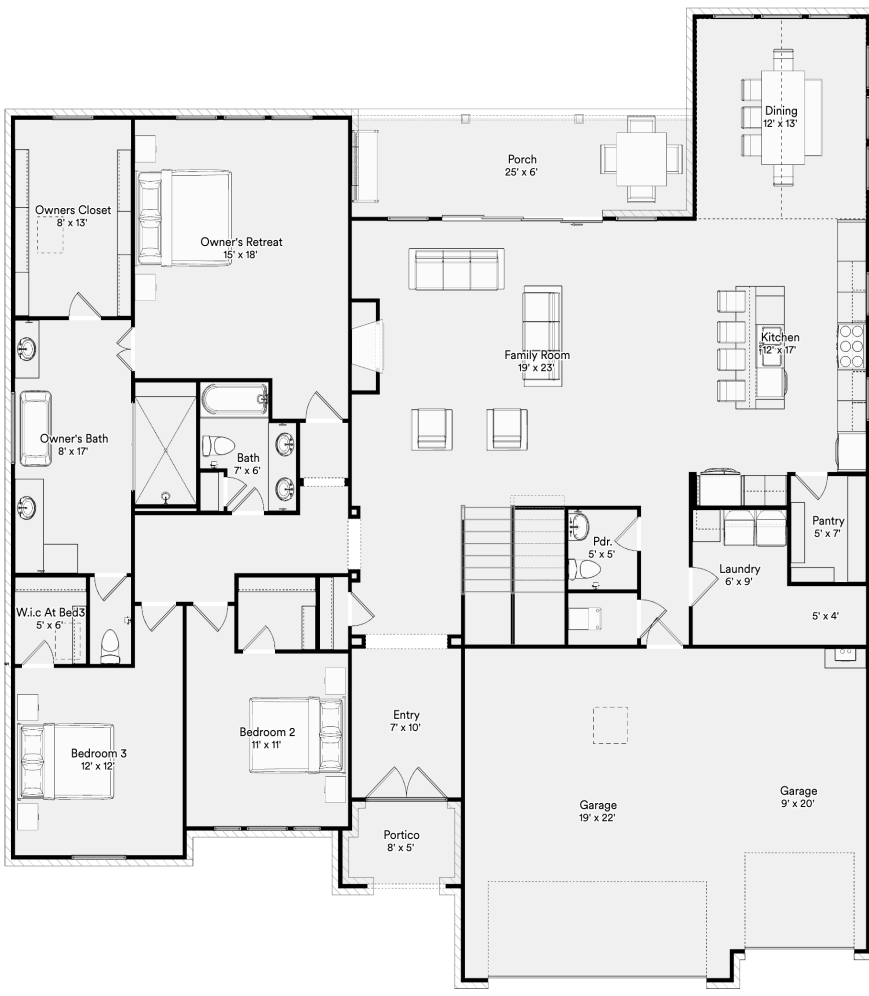


# The 8000 Anniston

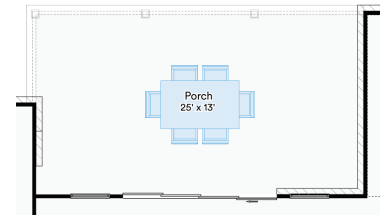
Ready to build a life you'll love

3,691+ SQFT | 4+ | 3.5+ | 3

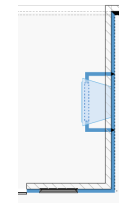
Model: Anniston      Base Price: --  
 Elevation: A,B,C,D      Options: --  
 Lot: --      Lot Premium: --  
 Total Price: --



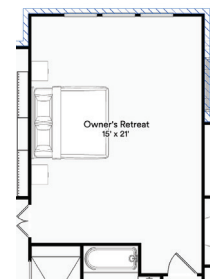
**First Floor**



**Enlarged Covered  
Patio**



**Outdoor  
Fireplace**

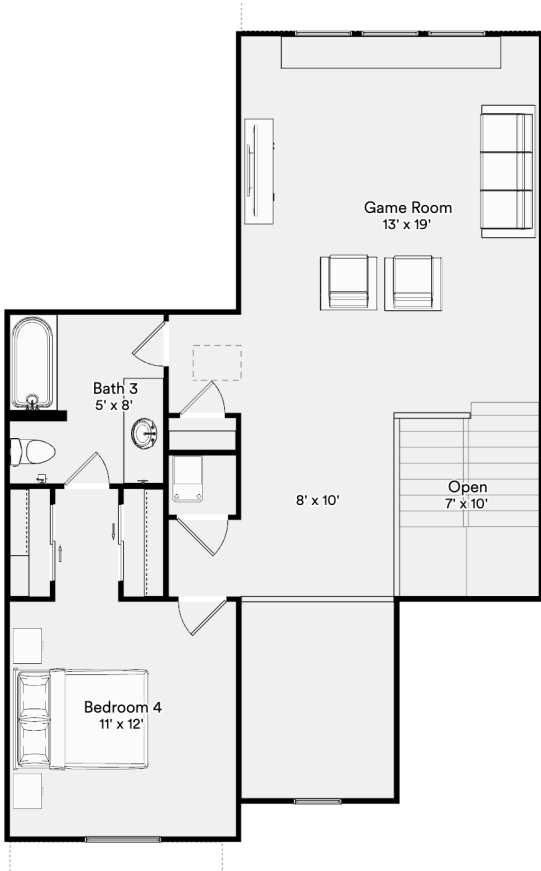


**Owners  
Extension**

Prices, plans, specifications, square footage, and availability are subject to change without notice or prior obligation. In the instance an option is unavailable or discontinued we have the right to replace the option with another option that is comparable in look, quantity, and price without notice or prior obligation. Square footage is approximate and may vary upon elevation and/or options selected. Selections made at the second Design Appointment are final and cannot be changed after the conclusion of the appointment.



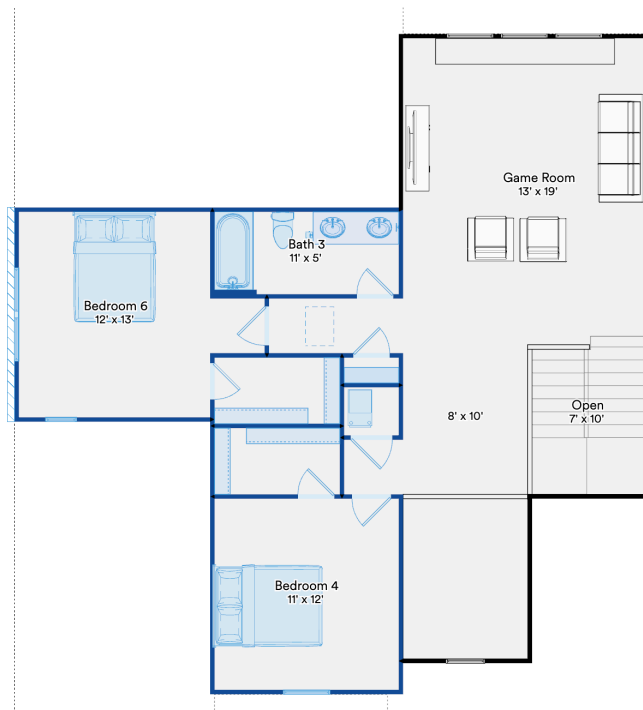
# The 8000 Anniston



**Second Floor**



with Bed 5 and Bath 4



Bed 6

Prices, plans, specifications, square footage, and availability are subject to change without notice or prior obligation. In the instance an option is unavailable or discontinued we have the right to replace the option with another option that is comparable in look, quantity, and price without notice or prior obligation. Square footage is approximate and may vary upon elevation and/or options selected. Selections made at the second Design Appointment are final and cannot be changed after the conclusion of the appointment.

