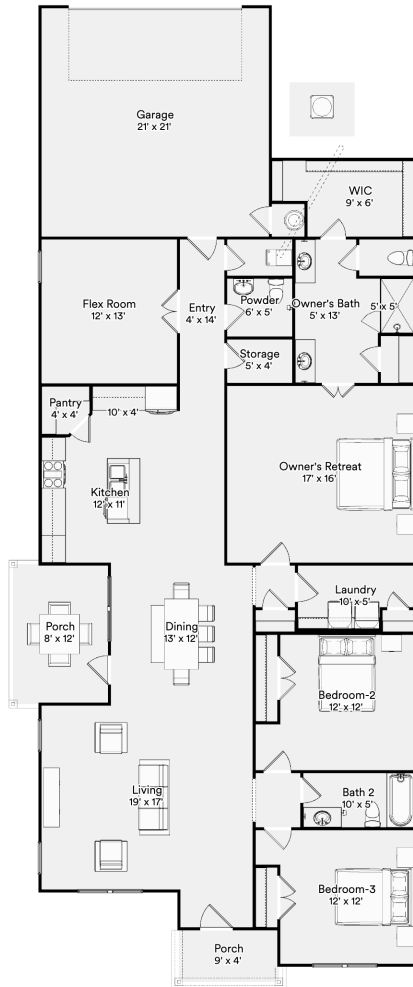


The 5005 Poppy

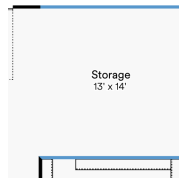
Ready to build a life you'll love

2,262+ SQFT | 3+ | 2.5 | 2

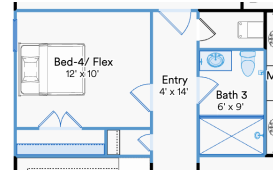
Model: Poppy Base Price: --
 Elevation: A,B,C Options: --
 Lot: -- Lot Premium: --
 Total Price: --



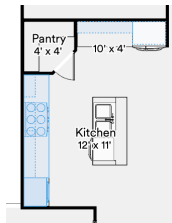
First Floor



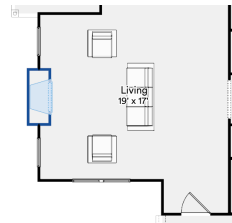
Optional Garage Bump Out



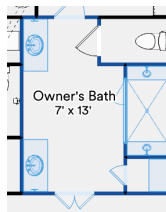
Bedroom 4 with Full Bath ILO Flex Room



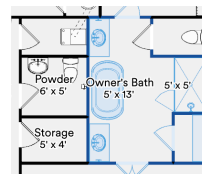
Single Oven with Cooktop



Optional Indoor Gas Fireplace at Family



Optional Euro Shower



Optional Free Standing Tub at Owners Suite

Prices, plans, specifications, square footage, and availability are subject to change without notice or prior obligation. In the instance an option is unavailable or discontinued we have the right to replace the option with another option that is comparable in look, quantity, and price without notice or prior obligation. Square footage is approximate and may vary upon elevation and/or options selected. Selections made at the second Design Appointment are final and cannot be changed after the conclusion of the appointment.

