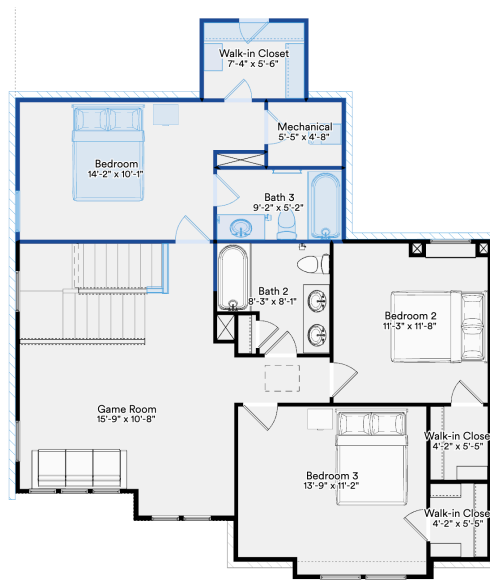


The 2208 Gramercy

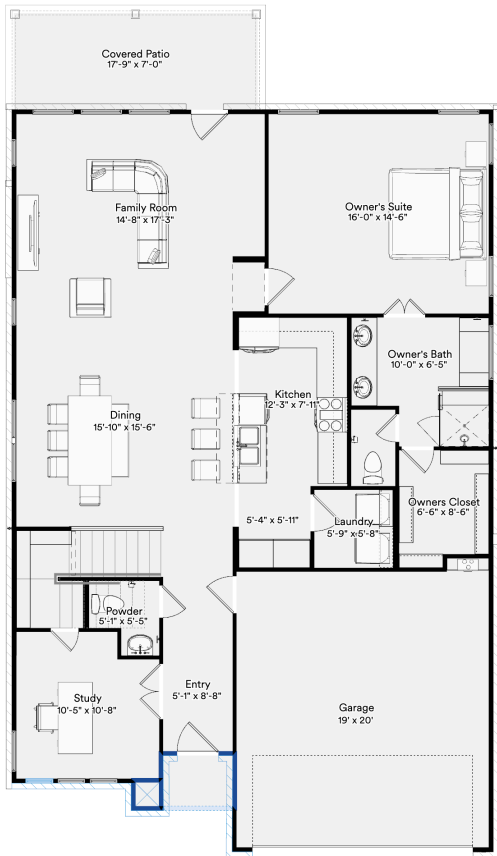
Ready to build a life you'll love

2,298+ SQFT | 3+ | 2.5+ | 2+

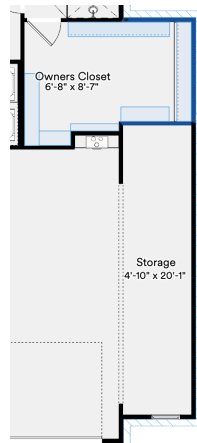
Model: Gramercy Base Price: \$--
 Elevation: A,B,C Options: --
 Lot: -- Lot Premium: --
 Total Price: --



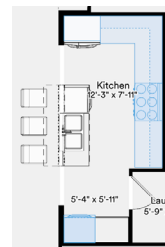
Second Floor
W/ Optional
4th Bedroom and Bath



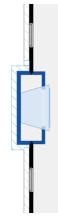
First Floor



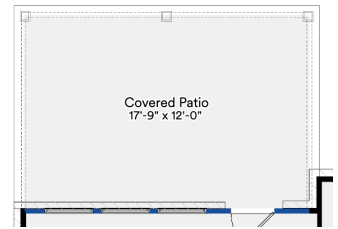
Optional Garage Storage w/
enlarged Owner's Walk-in



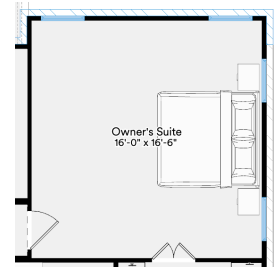
Single Oven
W/ Cooktop



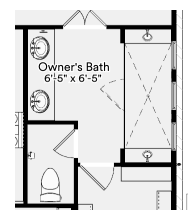
Optional Indoor Gas
Fireplace at Family



Optional Covered
Patio



Optional Extension
at Owners Suite



Optional Euro
Shower

Prices, plans, specifications, square footage, and availability are subject to change without notice or prior obligation. In the instance an option is unavailable or discontinued we have the right to replace the option with another option that is comparable in look, quantity, and price without notice or prior obligation. Square footage is approximate and may vary upon elevation and/or options selected. Selections made at the second Design Appointment are final and cannot be changed after the conclusion of the appointment. ©2005 Kipp Flores Architects

